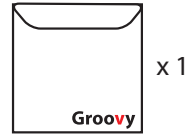
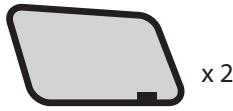
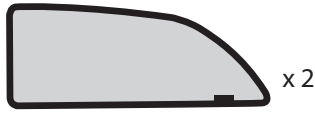


Parts List

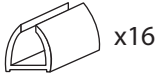
! **AVOID** use of sunshade when driving vision is impaired

Sunshades



Clips

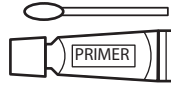
(CK-42)



Cleaning set



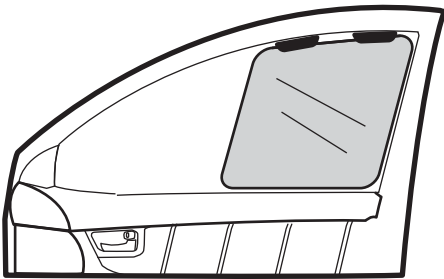
Alcohol Pad



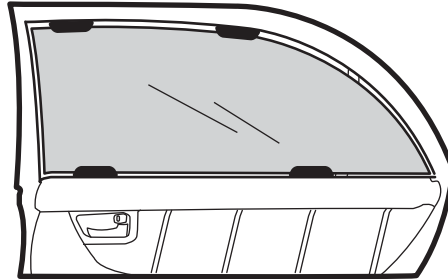
Primer

! *Apply primer **ONLY** if surface has been treated or polished

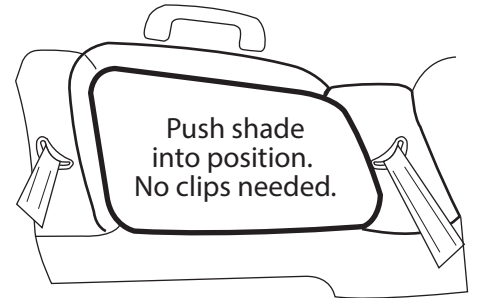
Recommended Clip Installation Positions



Front Door



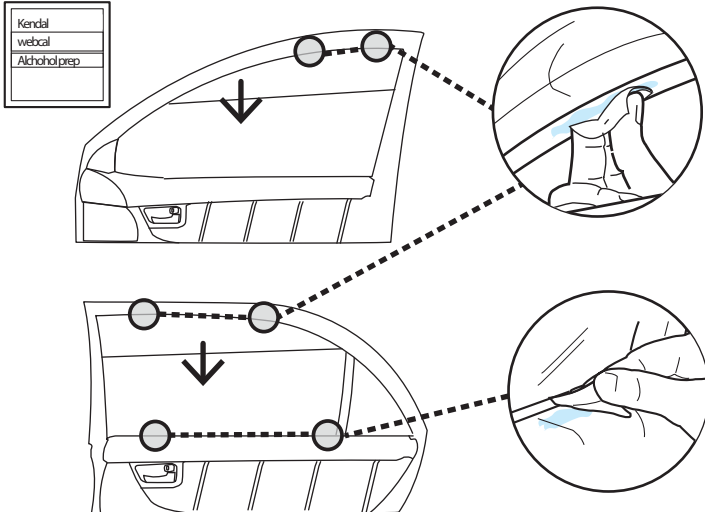
Rear Door



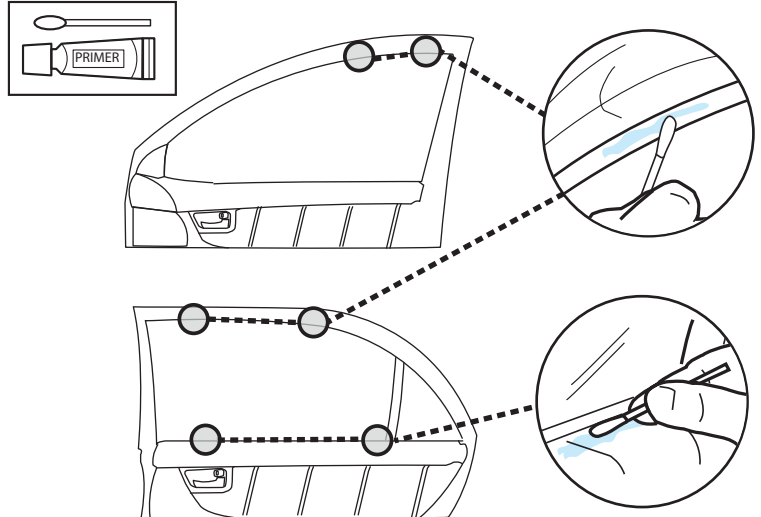
3rd row seat
(MPV/SUV models only)

Installation Guide

1 Wind down window halfway. Clean installation points with alcohol pad. Wait - 30 seconds.

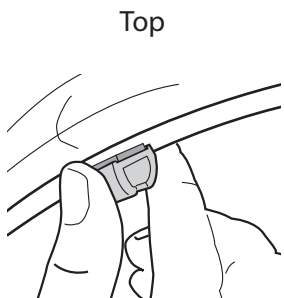


2 Apply primer at installation points. Wait - 30 seconds. The purpose is to increase adhesive efficiency between surface and tape.

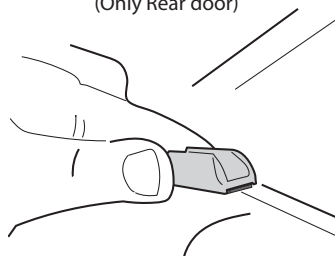


! Apply primer **ONLY** if surface has been treated or polished.

3 Attached all clips



Bottom
(Only Rear door)

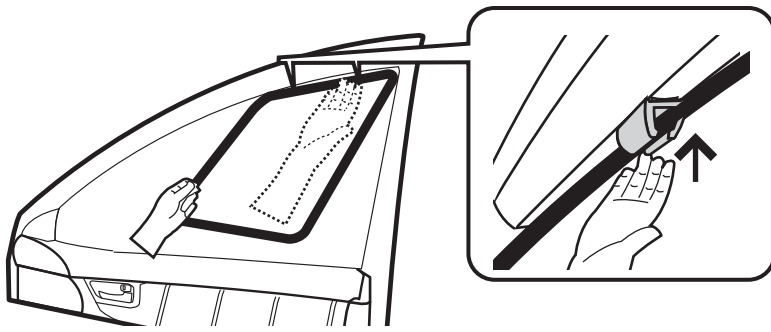


4 Repeat process no.1- 3 for all position

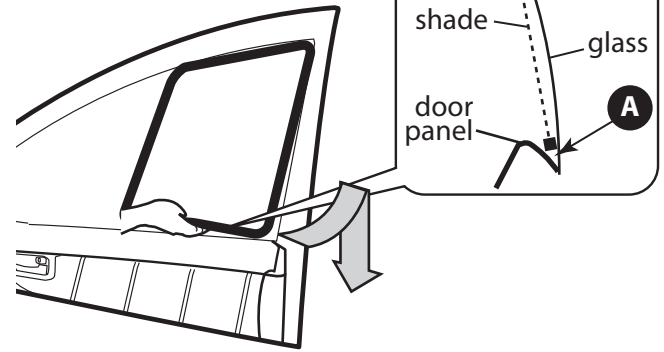
Sunshade Installation Guide

! **AVOID** use of sunshade when driving vision is impaired

Front Door



1 Insert top section of the sunshade into clips

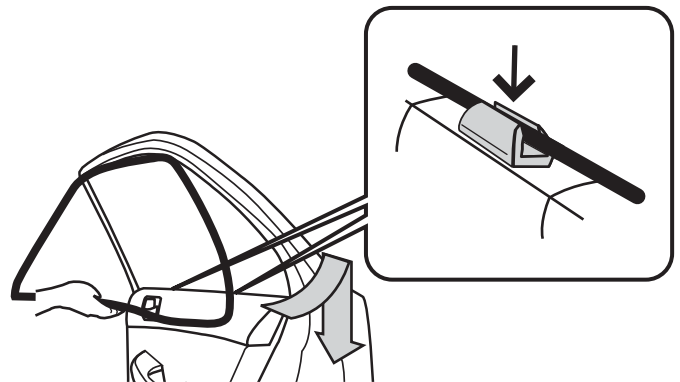


2 Insert bottom section of the sunshade into bottom side of door panel **A**

Rear Door

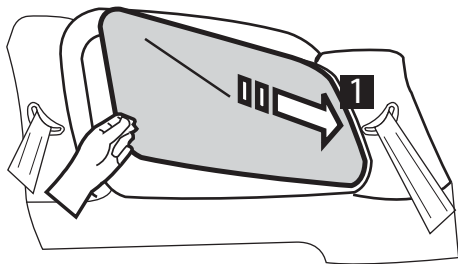


1 Insert top section of the sunshade into clips

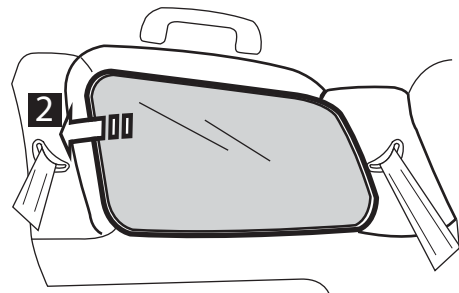


2 Insert bottom section of the sunshade into clips

3rd row window



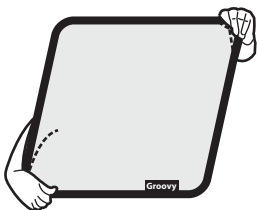
Insert rear corner of shade into panel **1**



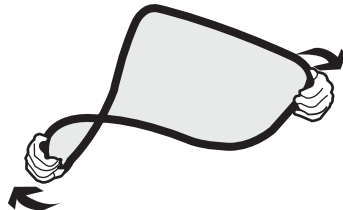
Insert front corner of shade into panel **2**

Collapse

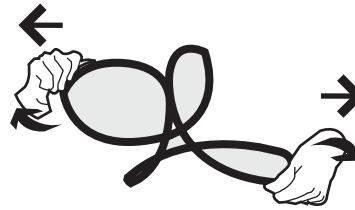
Step 1



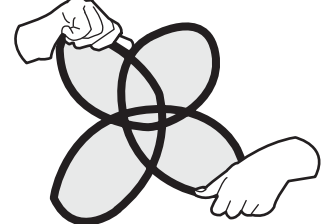
Step 2



Step 3



Step 4



Remark :-

- Apply primer only if surface has been treated or polished.
- Adhesive tape have the highest efficiency for one time use only.
- Adhesive efficiency will be increased 90 % within 24 hours and will be the highest efficiency within 72 hours.
- Normally, spring frame may be distorted slightly.
- Please avoid use of sunshade when driving vision is impaired.